

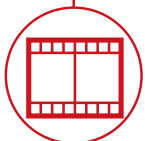
# TH 7.29



CONSTRUCTION



LOGISTICS



EVENTS AND  
FILM



TH  
7.29



**CAB**

Best-in-class  
safety and visibility



**PERFORMANCE**

Unrivaled lifting  
performance

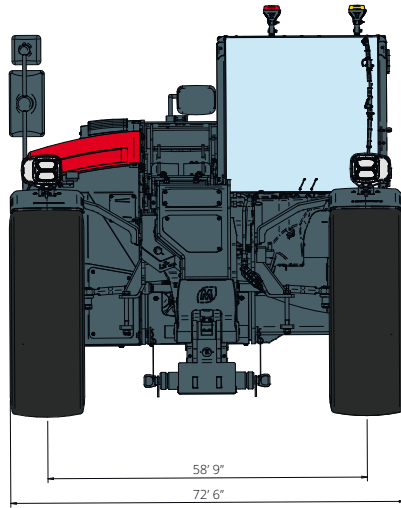


**LOAD LIVE DIAGRAM**

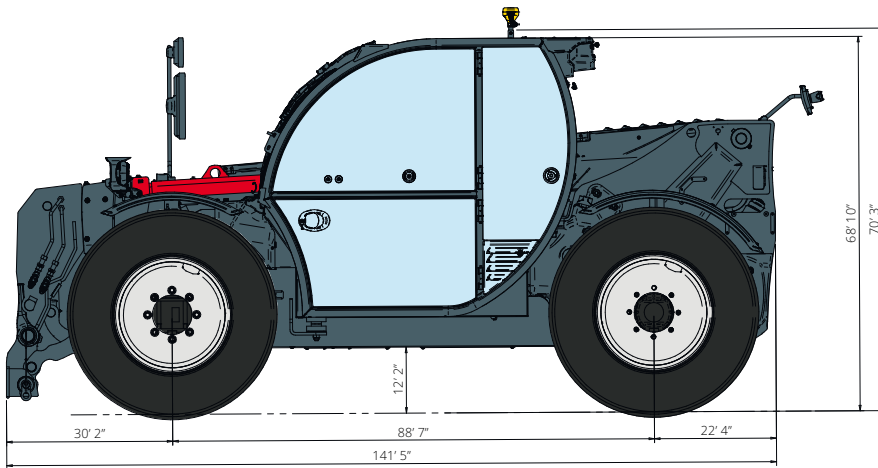
Two real-time dynamic  
load charts

# TH 7.29

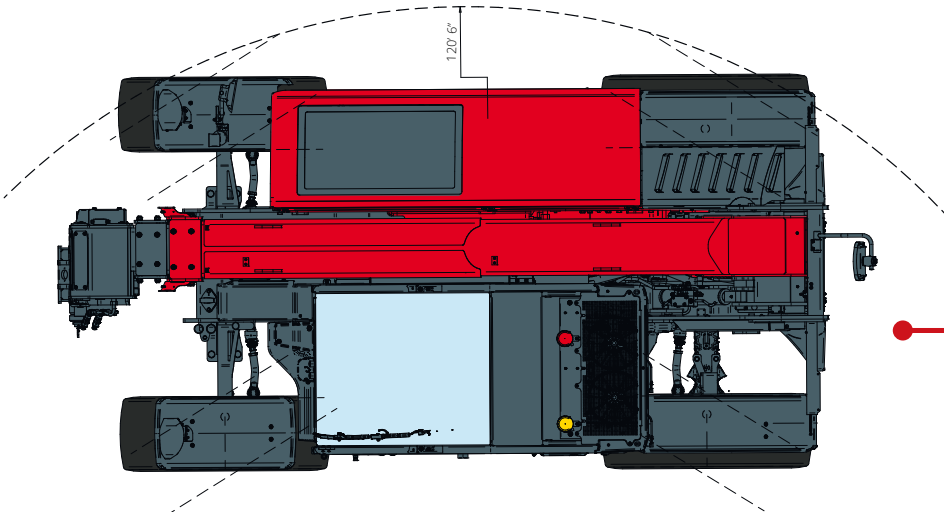
## DIMENSIONS (ft and in)



**FRONT**  
view



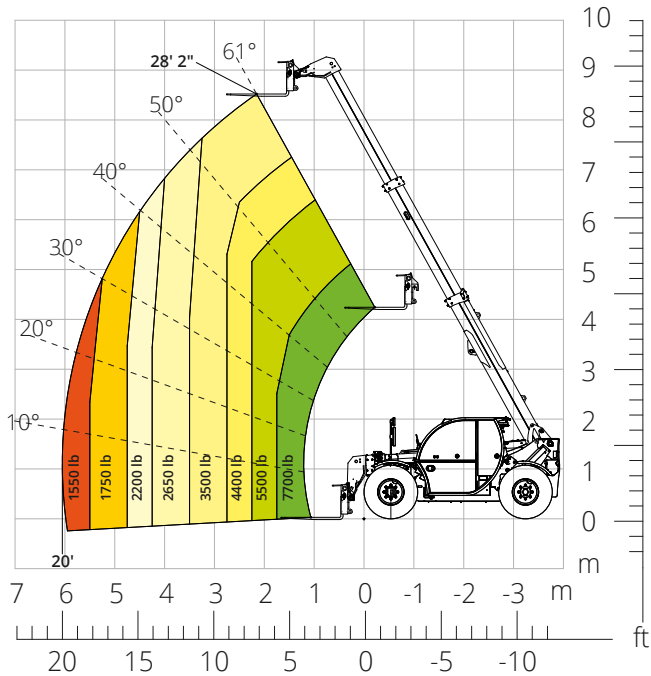
**SIDE**  
view



**TOP**  
view

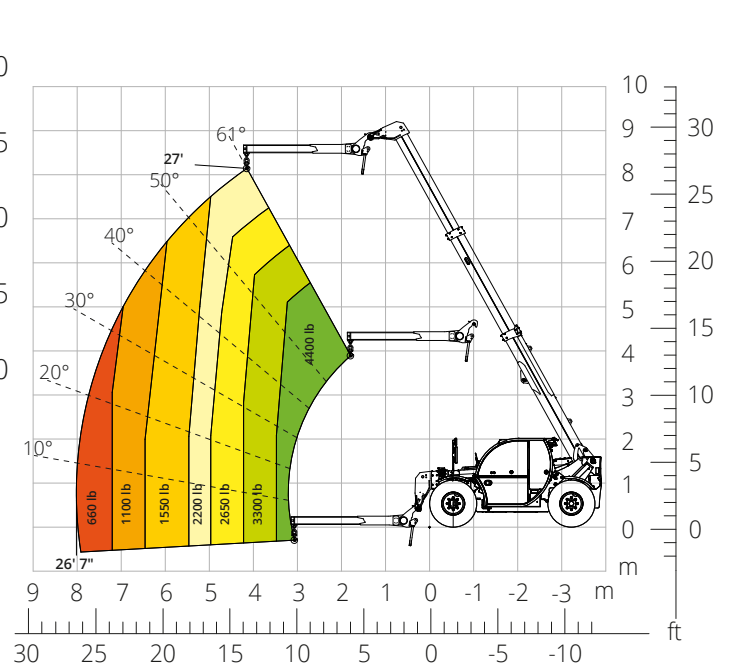
Load chart  
FRONT ATTACHMENT ON TIRES

ATT-03-039



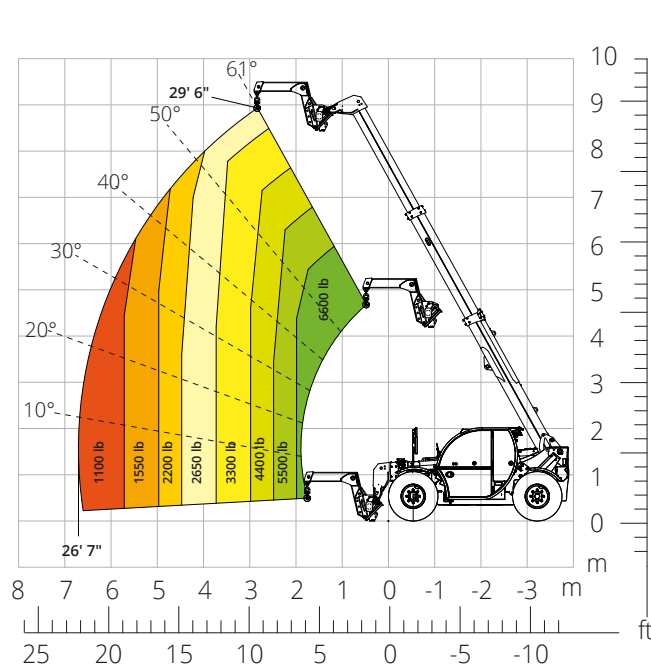
Load chart with  
JIB, 4,400 lb

ATT-04-013



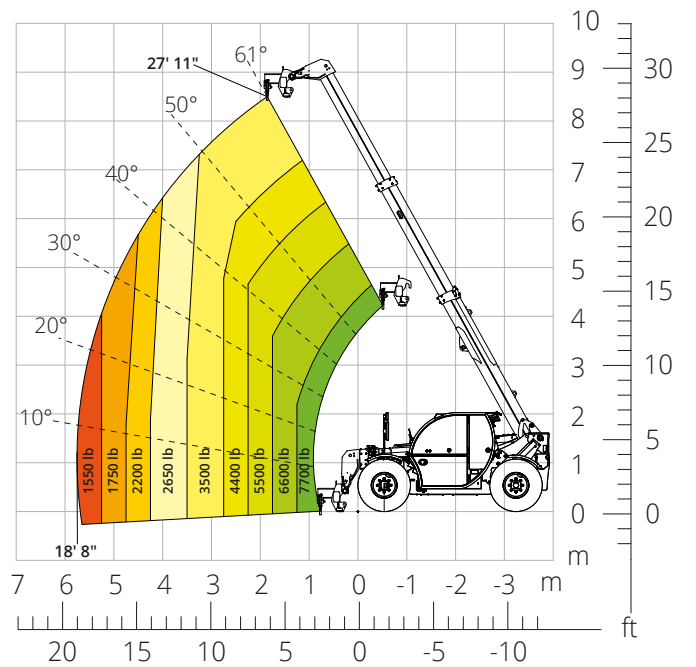
Load chart with  
6,600 lb "SWAN NECK" JIB

ATT-04-023



Load chart with  
HOOK, 11,000 lb

ATT-05-014



|  |   |  |                            |
|--|---|--|----------------------------|
| <b>Machine model</b>                   | Telescopic handler  | TH 7.29                                      |                            |
|  | Maximum lifting capacity  | 7,700 lb                                     |                            |
|  | Maximum lifting height  | 29' 2"                                       |                            |
|  | Maximum reach   | 20'  |                            |
| <b>Stabilisers</b>                     | Type  | -  |                            |
| <b>Engine</b>                          | Model   | Deutz TD 2,9<br>L4 EDG Stage IIIA            | Deutz TD 2,9<br>L4 Stage V |
|  | Rated power   | 55.4 kW (75.3 hp) at 2,600 rpm               |                            |
|  | Maximum torque  | 192 lb/ft at 1,600 rpm                       |                            |
|  | Displacement  | 177 in <sup>3</sup>                          |                            |
|  | Cylinders   | 4 in line                                    |                            |
|  | Engine configuration  | Turbocharged direct injection diesel         |                            |
|  | Cooling system  | Water  |                            |
| <b>Transmission</b>                    | Type  | Hydrostatic                                  |                            |
|  | Maximum pressure  | 500 bar                                      |                            |
|  | Gearbox   | Dropbox, 2 speeds forward-reverse            |                            |
| <b>Axles and brakes</b>                | Type  | Axles with planetary gearboxes               |                            |
|  | Front axle  | Steering                                     |                            |
|  | Rear axle   | Free oscillation                             |                            |
|  | No. of driving/steering wheels  | 4WD - 4WS                                    |                            |
|  | Steering mode   | Frontal/Concentric/Crab                      |                            |
|  | Service brake   | Wet multi-disk on front and rear axle        |                            |
|  | Parking brake   | Hydraulic with negative action on front axle |                            |
|  | Tyres sizes   | 380/75 R20                                   |                            |
| <b>Performance</b>                     | Max. travel speed   | 20 mph                                       |                            |
|  | Gradeability  | 89%  |                            |
|  | Turning radius (at forks)   | 14' 8"                                       |                            |
| <b>Weights</b>                         | Total unladen*  | 21,830 lb                                    |                            |
| <b>Tank and system capacities</b>      | Diesel Fuel   | 20 U.S. gal                                  |                            |
|  | AdBlue  | -  |                            |
|  | Hydraulic oil tank  | 25 U.S. gal                                  |                            |
|  | Engine oil  | 2.4 U.S. gal                                 |                            |
|  | Coolant   | 4 U.S. gal                                   |                            |
| <b>Hydraulic circuit for movements</b> | Circuit type  | Load sensing                                 |                            |
|  | Service pump  | Variable displacement                        |                            |
|  | Max. hydraulic flow rate  | 23.8 U.S. gpm                                |                            |
|  | Max. boom head flow rate  | 19.8 U.S. gpm                                |                            |
|  | Max. operating system pressure  | 315 bar                                      |                            |
|  | Controls for boom movements   | Compensated electro-proportional valve       |                            |
|  | Movements control   | 1 joystick with integrated manoeuvre enable  |                            |
| <b>Standard met</b>                    | 2006/42/EC: EU Machinery Directive<br>2016/1628: EU Regulation on the emissions of stage V engines<br>EN 1459-X: Relating to standards on the safety requirements for variable reach machines<br>EN 280-1: standards relating to mobile elevating work platforms (if available)<br>ROPS/FOPS level 2: relating to the standards for protective structures |  |                            |

The data given in this brochure are provided for information purposes and are subject to change without prior notice.

All images are purely guideline and might not give an exact representation of the product.

\*the stated weight refers to the vehicle unladen with standard equipment and may vary depending on the chosen configuration.

The standard machine configuration includes:

### **CAB**

- Comfort seat
- Verstellbares Lenkrad
- Adjustable sunblind
- Heating

### **REAL TIME INFORMATION**

- Touchscreen, 7"
- MCTS – Magni Combi Touch System on-board software
- LMI – Load Moment Indicator
- Onboard and remote integrated diagnostics

### **TECHNICAL SPECIFICATIONS**

- Q-Fit standard
- Advanced two-line CAN BUS system
- Automatic front and rear wheel alignment
- Automatic parking brake
- External battery cut-off
- Electrical system: 12 V – IP67

### **SERVICE**

- Warranty: 24 months/2,000 hours