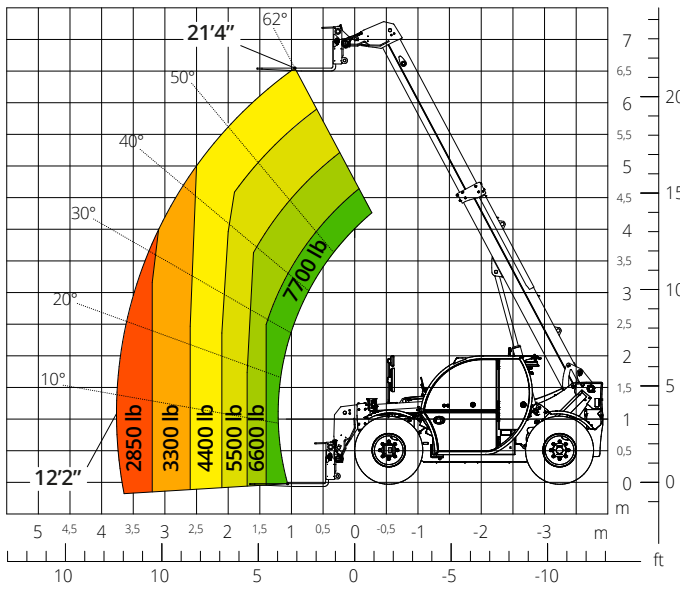


TH



7.21

PRELIMINARY



Load chart on tyres



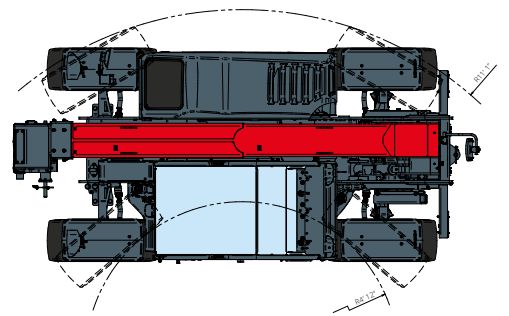
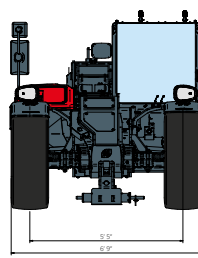
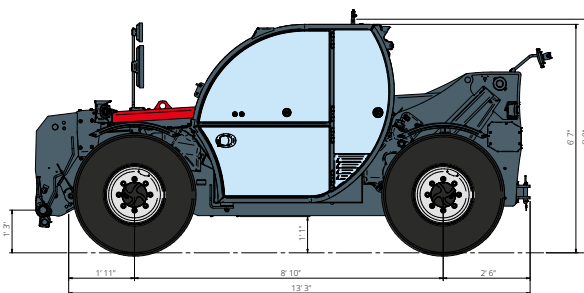
CONSTRUCTION



LOGISTICS



EVENTS AND FILM



Machine model	Telescopic handler	TH 7.21	
	Maximum lifting capacity	7,700 lb	
	Maximum lifting height	21' 4"	
	Maximum reach	12' 2"	
Stabilisers	Type	-	
	Model	Deutz TD 2,9 L4 EDG Stage IIIA	Deutz TD 2,9 L4 Stage V
Engine	Rated power	55.4 kW (75.3 hp) at 2,600 rpm	
	Maximum torque	192 lb/ft at 1,600 rpm	
	Displacement	177 in ³	
	Cylinders	4 in line	
	Engine configuration	Turbocharged direct injection diesel	
	Cooling system	Water	
Transmission	Type	Hydrostatic	
	Maximum pressure	500 bar	
	Gear box	Dropbox, 2 speeds	
Axles and brakes	Type	Axles with planetary gearboxes	
	Front axle	Steering	
	Rear axle	Free oscillation	
	No. of driving/steering wheels	4WD - 4WS	
	Steering mode	Frontal/Concentric/Crab	
	Service brake	Wet multi-disk on front and rear axle	
	Parking brake	Hydraulic with negative action on front axle	
	Tyres dimensions	380/75 R20	
Performance	Max. travel speed	20 mph	
	Gradeability (unladen)	89%	
	Turning radius (end of forks)	14' 8"	
Weights	Total unladen*	14.400 lbs	
Tank and system capacities	Fuel tank	20 U.S. gal	
	AdBlue	-	
	Hydraulic oil tank	25 U.S. gal	
	Engine oil tank	2.4 U.S. gal	
	Cooling liquid	4 U.S. gal	
Hydraulic circuit for movements	Circuit type	Load sensing	
	Service pump	Variable displacement	
	Max. hydraulic flow rate	23.8 U.S. gpm	
	Max. boom head flow rate	19.8 U.S. gpm	
	Max. operating system pressure	315 bar	
	Controls for boom movements	Compensated electro-proportional valve	
	Movements control	1 joystick with integrated manoeuvre enable	
Standard met	2006/42/EC: EU Machinery Directive		
	2016/1628: EU Regulation on the emissions of stage V engines		
	EN 1459-X: Relating to standards on the safety requirements for variable reach machines		
	EN 280-1: standards relating to mobile elevating work platforms (if available)		
	ROPS/level 2 FOPS: relating to the standards for protective structures		

The data given in this brochure are provided for information purposes and are subject to change without prior notice.
All images are purely guideline and might not give an exact representation of the product.

*the stated weight refers to the vehicle unladen with standard equipment and may vary depending on the chosen configuration.