

TH

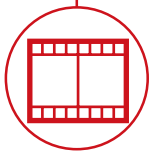
6.19



CONSTRUCTION



LOGISTICS



EVENTS AND
FILM



TH
6.19



CAB
Best-in-class
safety and visibility



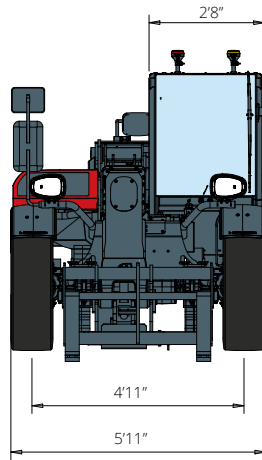
PERFORMANCE
Unrivalled lifting
performance



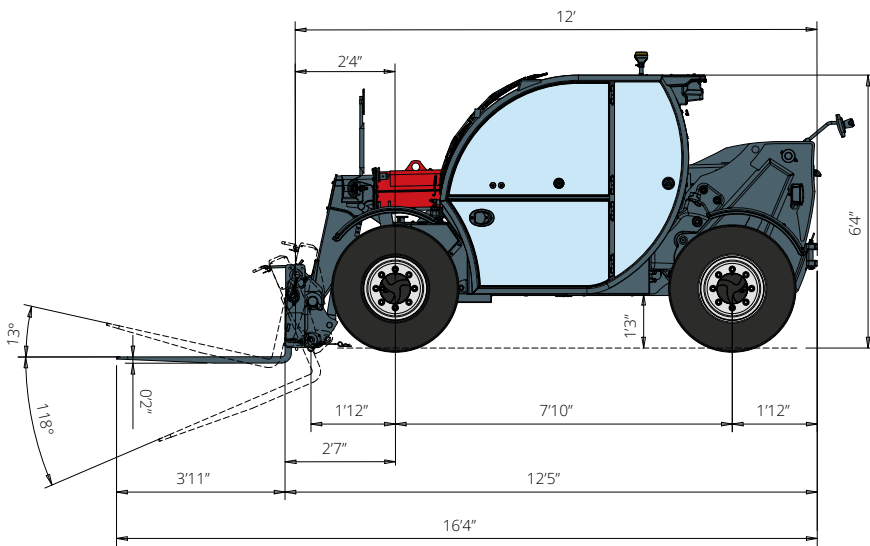
LOAD LIVE DIAGRAM
Two real-time dynamic
load charts

TH 6.19

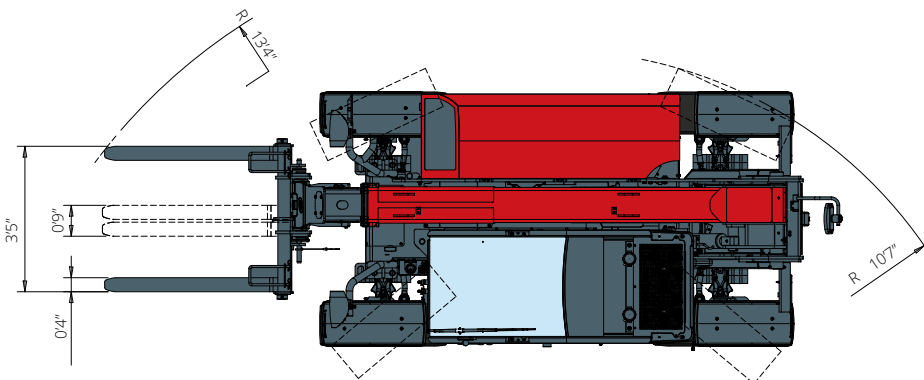
DIMENSIONS (ft and in)



FRONT
view

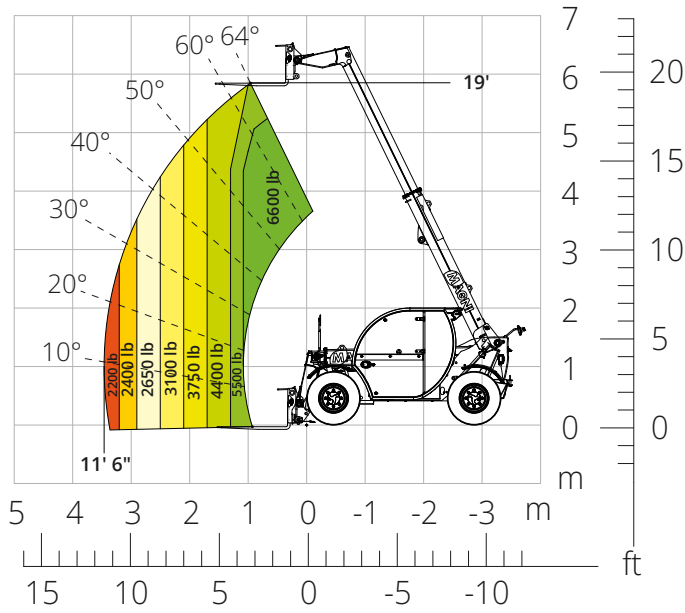


SIDE
view

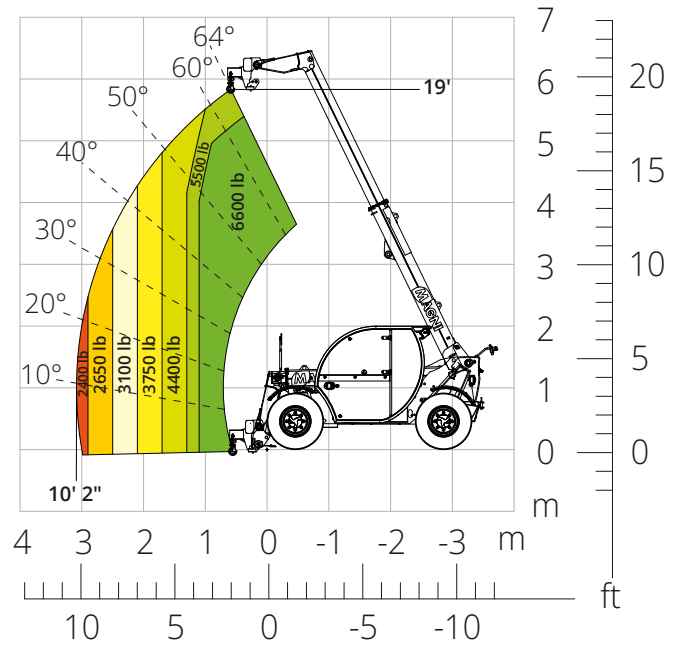


TOP
view

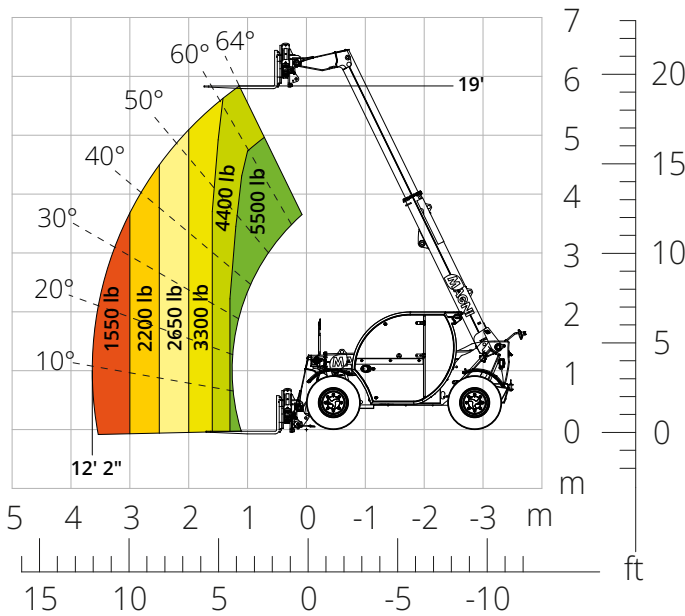
Load chart with
FEM FORK CARRIAGE 6,600 lb
ATT 03-016



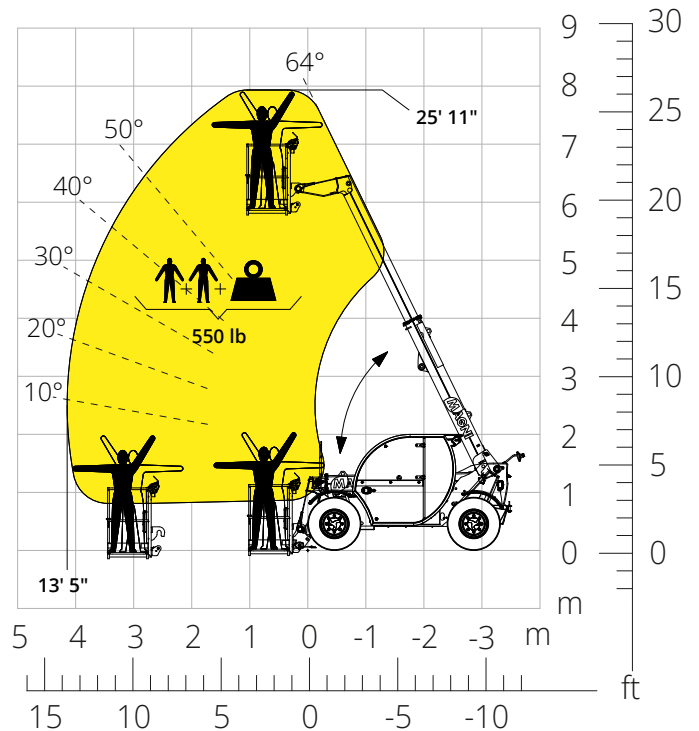
Load chart with
HOOK, 6,600 lb
ATT-05-004



Load chart with
FEM FORK CARRIAGE 5,500 lb,
SIDE TIPPING - FOR EMPTYING BINS
ATT-03-054



Load chart with
FIXED PLATFORM, 550 lb
ATT-01-002



Machine model	Telescopic handler	TH 6.19	
	Maximum lifting capacity	6,600 lb	
	Maximum lifting height	19'	
	Maximum reach	10'6"	
Stabilizers	Type	-	
	Model	Deutz TD 2,9 L4 EDG Stage IIIA	Deutz TD 2,9 L4 Stage V
Engine	Rated power	55.4 kW (75.3 hp) at 2,600 rpm	
	Maximum torque	192 lb/ft at 1,600 rpm	
	Displacement	177 in ³	
	Cylinders	4 in line	
	Engine configuration	Turbocharged direct injection diesel	
	Cooling system	Water	
	Transmission	Type	Hydrostatic
Maximum pressure		500 bar	
Gearbox		Electronic 2 speeds forward reverse	
Type		Axles with planetary gearboxes	
Axles and brakes	Front axle	Steering	
	Rear axle	Free oscillation	
	No. of steering wheels	4WD - 4WS	
	Steering mode	Frontal/Concentric/Crab	
	Service brake	Wet multi-disk on front axle	
	Parking brake	Hydraulic with negative action on front axle	
	Tyres sizes	12.0/75 R18	
	Performance	Max. travel speed	21 mph
Gradeability (unladen)		83%	
Turning radius (at forks)		13' 4"	
Weights	Total unladen*	10,700 lb	
	Diesel fuel	17.2 U.S. gal	
Tank and system capacities	AdBlue	-	
	Hydraulic fluid	22.4 U.S. gal	
	Engine oil	2.37 U.S. gal	
	Coolant	4 U.S. gal	
	Hydraulic circuit for movements	Circuit type	Gear pump
Service pump		Fixed displacement	
Max. hydraulic flow rate		23 U.S. gpm	
Max. boom head flow rate		19.8 U.S. gpm	
Max. operating system pressure		255 bar	
Controls for boom movements		Post-compensated electro-proportional valve	
Movements control		1 joystick with integrated manoeuvre enable	
Standards met		2006/42/EC: EU Machinery Directive	
	2016/1628: EU Regulation on the emissions of stage V engines		
	EN 1459-X: Relating to standards on the safety requirements for variable reach machines		
	EN 280-1: standards relating to mobile elevating work platforms (if available)		
	ROPS/FOPS: relating to the standards for protective structures		

The data given in this brochure are provided for information purposes and are subject to change without prior notice.
All images are purely guideline and might not give an exact representation of the product.

*the stated weight refers to the vehicle unladen with standard equipment and may vary depending on the chosen configuration.

The standard machine configuration includes:

CAB

- Air suspension comfort seat
- Adjustable steering column
- Adjustable sunblind
- Heating
- USB Type-A and Type-C (5 V) inputs

REAL TIME INFORMATION

- Touchscreen, 7"
- MCTS – Magni Combi Touch System on-board software
- LMI – Load Moment Indicator
- Onboard and remote integrated diagnostics

TECHNICAL SPECIFICATIONS

- Q-fit type 2 standard
- Advanced two-line CAN BUS system
- Automatic front and rear wheel alignment
- Automatic parking brake
- External battery cut-off
- Electrical system: 12 V – IP67

SERVICE

- Warranty: 24 months/2,000 hours