

PRELIMINARY

MAGNI
TELESCOPIC HANDLERS



TH 3.6



CONSTRUCTION



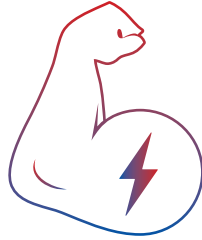
LOGISTICS



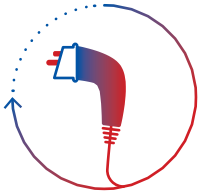
MORE ENERGY, LESS WASTE

The 350V battery offers **power and durability**, reduces energy losses, extending the machine efficiency, thanks to a significant reduction in electrical currents circulating on the machine. Lighter components, less wear and tear and **maximum reliability**.

POWER AND SMOOTH MOVEMENTS

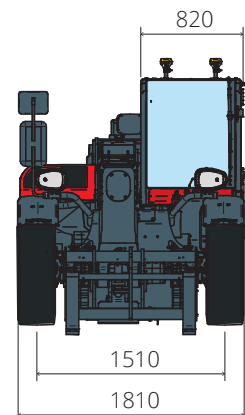
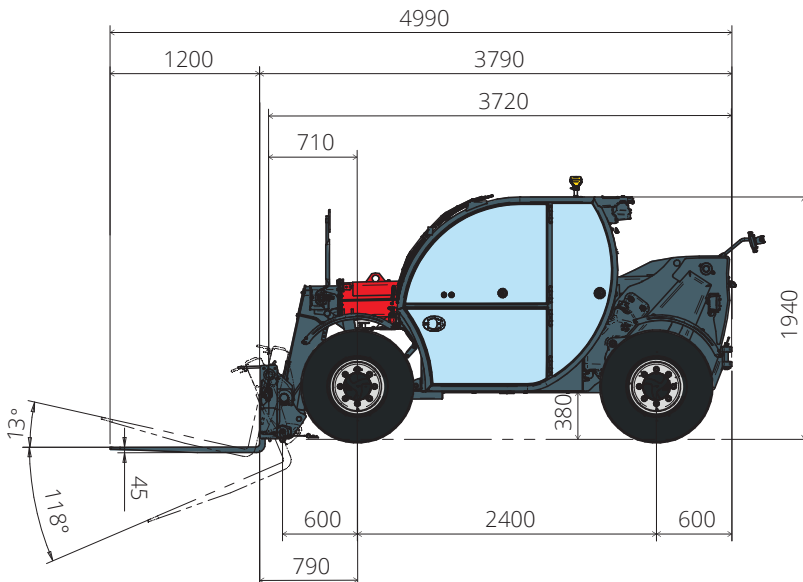
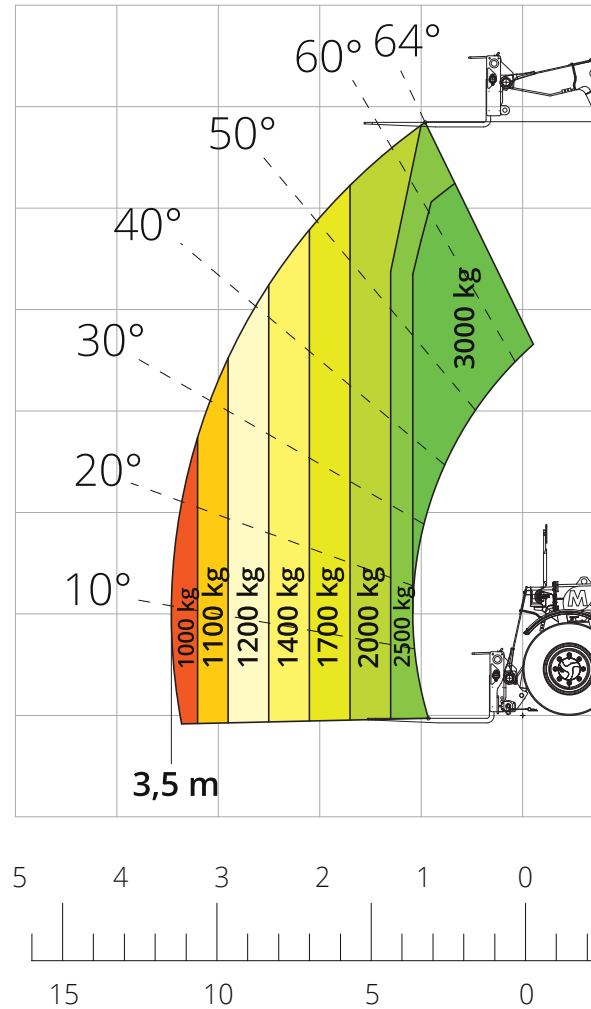


Hydrostatic transmission with electric motor guarantees **the same power as diesel**: towing up at 41 kN, gradients of 83% and speeds of up to 20 km/h. All with zero emissions and always consistent performance.



FAST RECHARGE AND CONTINUOUS WORKING PERFORMANCE

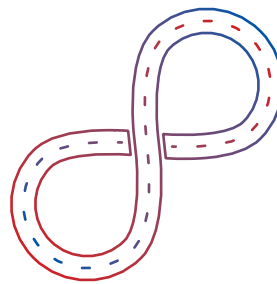
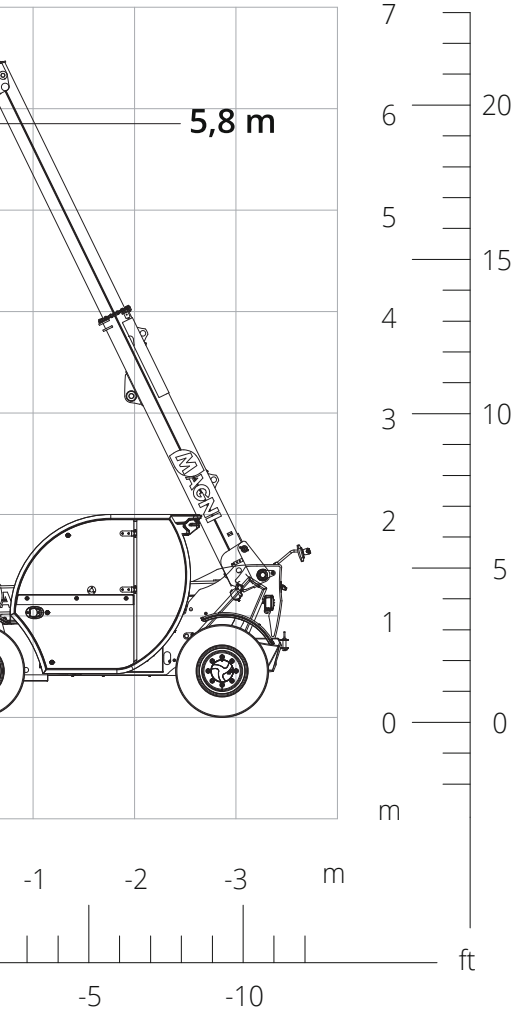
The full charging cycle with the 6.6 kW Type 2 on-board charger takes up to 5.5 hours. A 13 kW on-board charger (up to 3 hours charging time) and a 28 kW Superfast CCS version (1 hour to charge up to 80%) will also be available as options **to suit every need**.





SMART ENERGY RECOVERY

Every time you brake or slow down, the regenerative system **recharge the battery on the go**.
More autonomy, less brake wear, more comfort and silence during work.



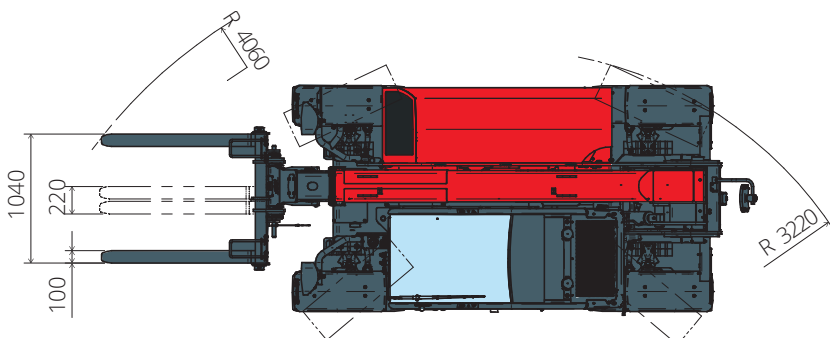
VERSATILITY IN MOTION

Thanks to power supply, the TH 3.6 e can **work anywhere**:
indoor, in cities, and in construction sites with emission or noise limits. Always quiet and comfortable for the operator.



AN INVESTMENT WHICH IS WORTH IT

Lower running and maintenance costs, reduced compared to the thermic engine version, and the possibility of accessing **incentives of up to 80%**.
With electric, savings are real and immediate.



Machine model	Telescopic handler	TH 3.6 e
	Maximum lifting capacity	3,000 kg
	Maximum lifting height	5.80 m
	Maximum reach	3.50 m
Stabilisers	Type	-
Engine	Rated power	54 kW
	Cooling system	Water
Battery and charge	Battery type	Lithium - Ion
	Rated energy	35 kW/h
	Rated voltage	351 V
	Battery capacity	100 Ah
	Battery autonomy	Up to 8 hours
	Charger type/ kW/charge time	Type 2 / 6,6 kW / 5,5 hr (std) Type 2/13 kW / 3 hr (opt) CCS (superfast DC) / 28 kW / 1 hr (opt)
Transmission	Type	Hydrostatic
	Maximum pressure	500 bar
	Gear box	Direct drive 2 speed
Axles and brakes	Type	Axles with planetary gearboxes
	Front axle	Steering
	Rear axle	Free oscillation
	No. of driving/steering wheels	4WD - 4WS
	Steering mode	Frontal/Concentric/Crab
	Service brake	Wet multi-disk on front axle
	Parking brake	Hydraulic with negative action on front axle
Performance	Tyres dimensions	12.0/75 R18
	Max. travel speed	20 km/h
	Gradeability (unladen)	83%
Weights	Turning radius (end of forks)	4,060 mm
	Total unladen*	4,950 kg
Tank and system	Hydraulic oil tank	85 l
	Cooling liquid	5 l
Hydraulic circuit for movements	Circuit type	Load sensing
	Service pump	Variable displacement
	Max. hydraulic flow rate	87 l/min
	Max. boom head flow rate	75 l/min
	Max. operating system pressure	255 bar
	Controls for boom movements	Electro-proportional valve
Standard met	Movements control	1 joystick with integrated manoeuvre enable
		2006/42/EC: EU Machinery Directive EN 1459-X: Relating to standards on the safety requirements for variable reach machines EN 280-1: standards relating to mobile elevating work platforms (if available) ROPS/FOPS: relating to the standards for protective structures

*The data given in this brochure are provided for information purposes and are subject to change without prior notice.
All images are purely guideline and might not give an exact representation of the product.
the stated weight refers to the vehicle unladen with standard equipment and may vary depending on the chosen configuration.