



HTH

110.46



MINING &
QUARRYING



HEAVY
LOGISTICS



DEFENCE

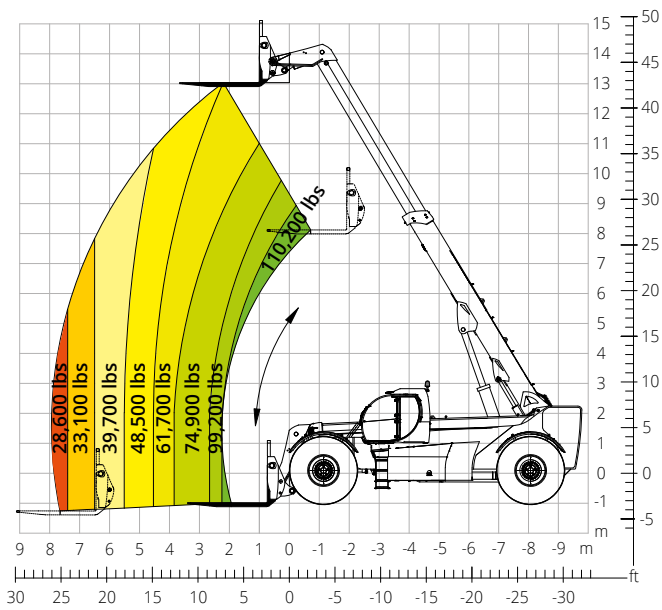
Machine model	Telescopic handler	HTH 110.46	
	Maximum lifting capacity	110,200 lb	
	Maximum lifting height	45'11"	
	Maximum reach	26' 3"	
Engine	Model	Volvo TAD883 VE- Stage V	Volvo TAD853 VE- Stage IIIA
	Rated power	235 kW (320 hp) at 2,200 rpm	
	Maximum torque	1,300 Nm at 1,400 rpm	1,310 Nm at 1,450 rpm
	Displacement	7.7 l	
	Cylinders	4 in line	
	Engine type	Turbocharged diesel direct injection common rail	
	Cooling system	Water - intercooler	
Transmission	Type	Variable displacement hydrostatic drive with electronic control	
	Maximum pressure	-	
	Gearbox	3-Speed forward/reverse dropbox with hydraulic differential lock	
Axles and brakes	Type	Heavy-duty with planetary gearboxes	
	Front axle	With auto levelling	
	Rear axle	Rear oscillating	
	No. of driving - steering wheels	4WS	
	Steering mode	Frontal/Concentric/Crab	
	Service brake	Hydraulic multi-disc service brakes in oil bath on both axles, with dual circuit	
	Parking brake	Negative	
	Tyre sizes	29,5 - R 25	
Performance	Max. travel speed	12,4 mph	
	Gradeability (unladen)	50%	
	Turning radius	31'6"	
Weights	Total unladen*	150,000 lb	
Tank and system capacities	Diesel fuel	-	
	AdBlue	-	
	Hydraulic fluid	-	
	Engine oil	-	
	Coolant	-	
Hydraulic circuit for movements	Circuit type	Load sensing	
	Service pump	-	
	Max. hydraulic flow rate	-	
	Max. boom head flow rate	-	
	Max. working pressure	350 bar	
	Distributor for boom movements	Proportional hydraulic distributor	
	Movements control	Multifunction electro-proportional joystick	
Standards met	2006/42/EC: EU Machinery Directive		
	2016/1628: EU Regulation on the emissions of stage V engines		
	EN 1459-X: Relating to standards on the safety requirements for variable reach machines		
	ROPS/level 2 FOPS: relating to the standards for protective structures		

The data given in this brochure are provided for information purposes and are subject to change without prior notice.

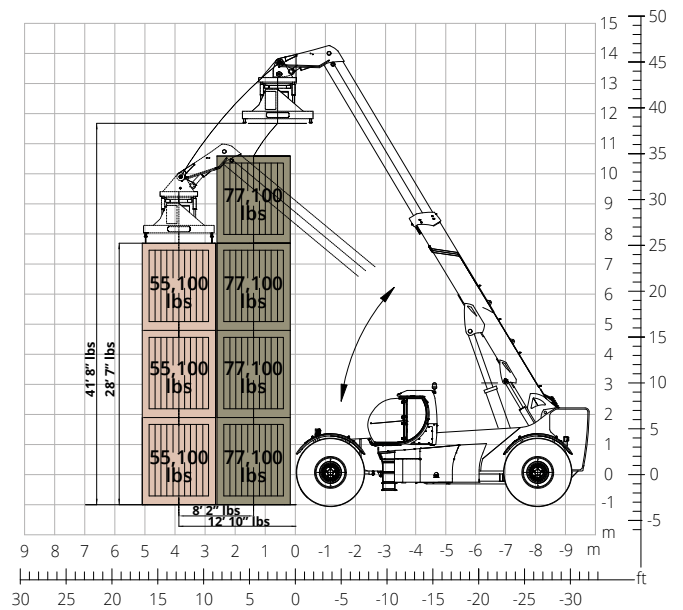
All images are purely guideline and might not give an exact representation of the product.

**the stated weight refers to the vehicle unladen with standard equipment and may vary depending on the chosen configuration.*

Load chart
FRONT ATTACHMENT ON TYRES



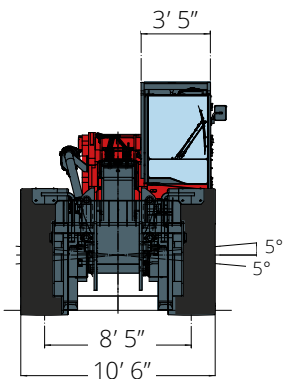
Load chart with
CONTAINER SPREADER 20"- 40"



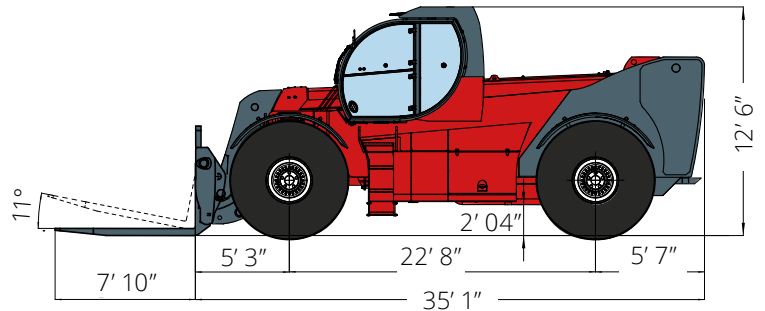
HTH 110.46



DIMENSIONS (mm)



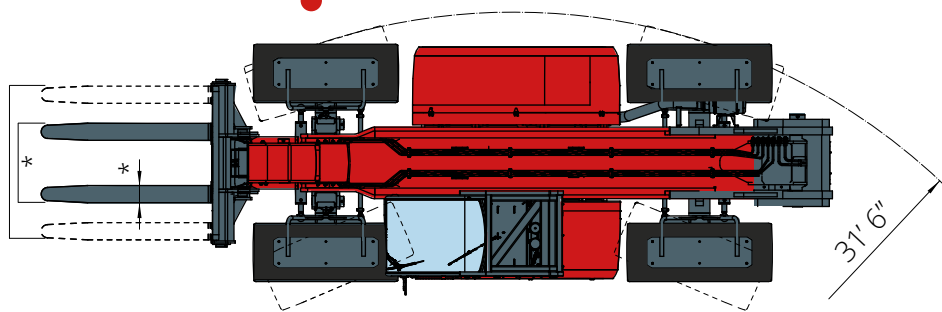
FRONT
view



SIDE
view

TOP
view

* On request



The standard machine configuration includes:

CAB

- Comfort seat
- Adjustable steering column
- Analogue joypad
- Heating
- Air conditioning
- FM/AM radio with USB and Bluetooth connectivity
- USB Type-A (5 V) inputs

TECHNICAL SPECIFICATIONS

- Q-Fit Heavy-Duty
- Two-line CAN BUS system
- Automatic front and rear wheel alignment
- Automatic parking brake
- Mechanical battery cut-off in engine compartment
- Electrical system: 24 V – IP67

REAL TIME INFORMATION

- Touchscreen, 7"
- MCTS – Magni Combi Touch System on-board software
- Automatic RFID tools recognition system
- LMI – Load Moment Indicator
- Onboard and remote integrated diagnostics

SERVICE

- MyMagni by Trackunit connectivity system (Free of charge on request)
- Warranty: 24 months/2,000 hours