

# HTH

## 35.32



MINING &  
QUARRYING



HEAVY  
LOGISTICS

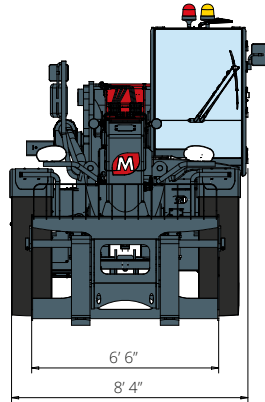


DEFENSE

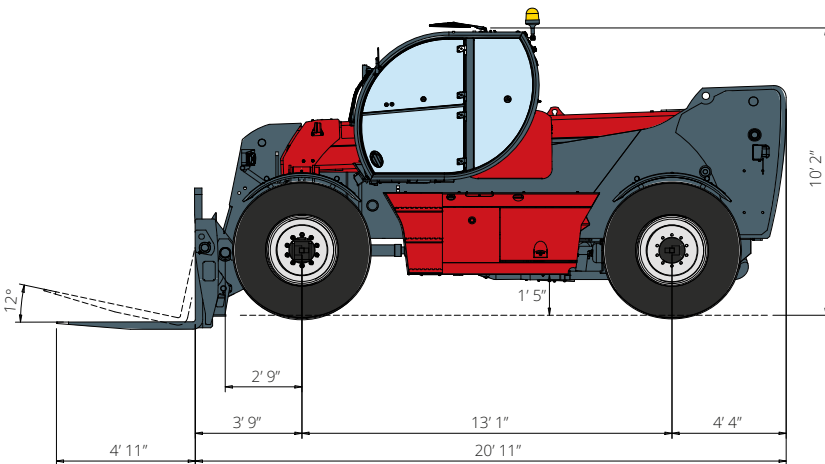


# HTH 35.32

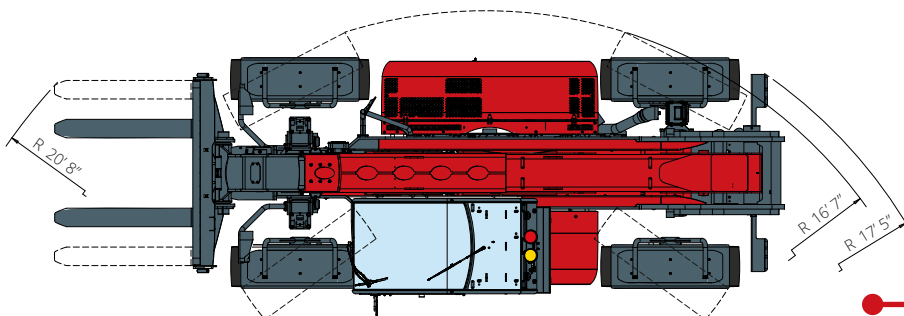
## DIMENSIONS (ft and in)



**FRONT**  
view

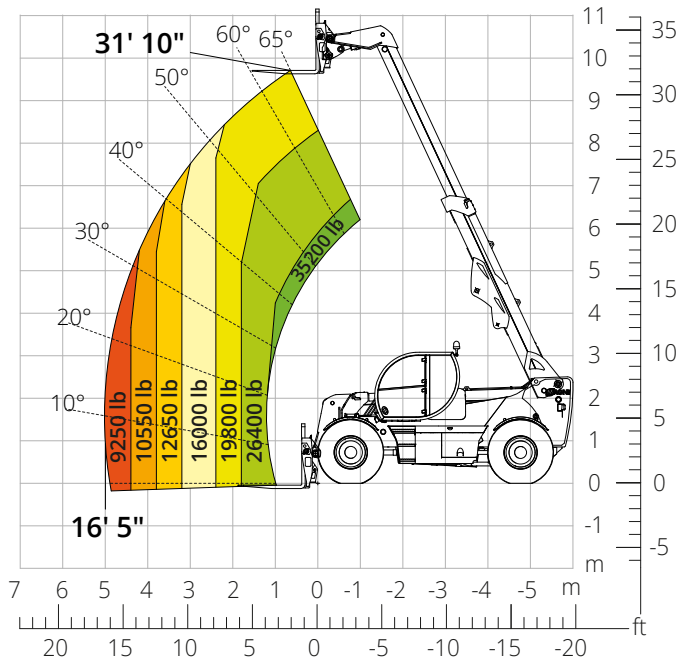


**SIDE**  
view

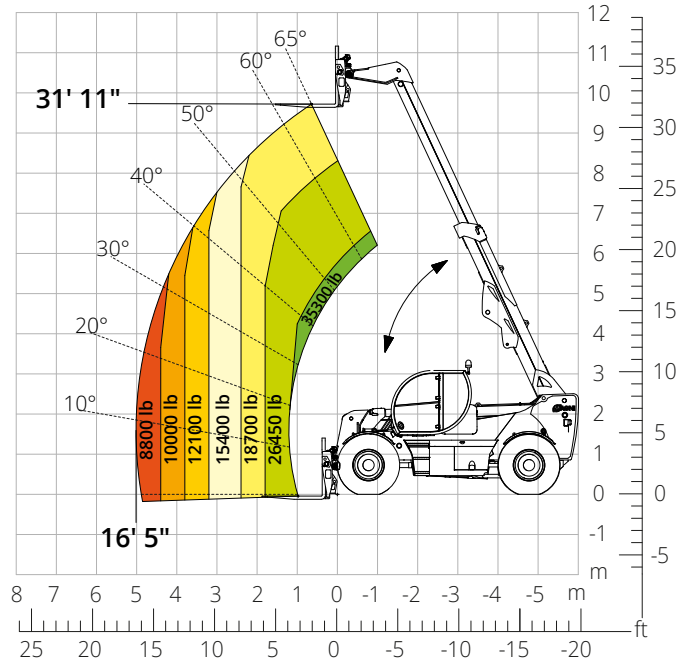


**TOP**  
view

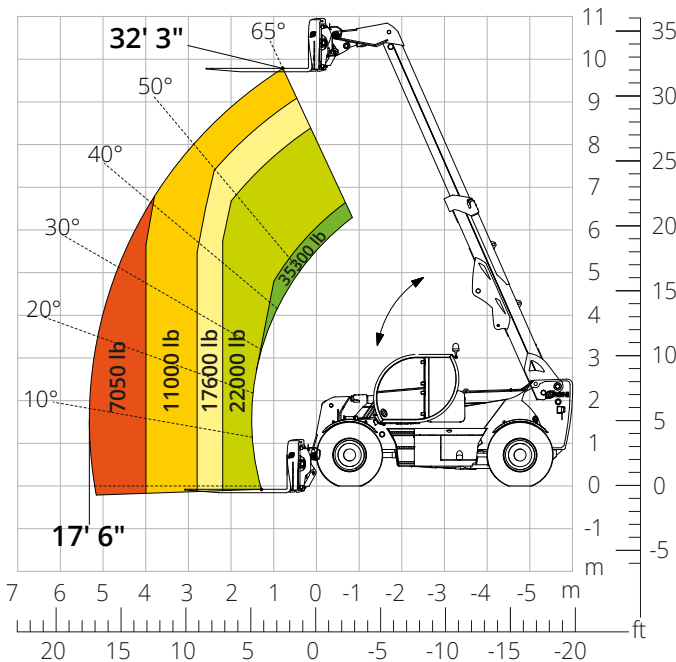
Load chart  
**FRONT ATTACHMENT ON TIRES (WORLD NOT AUS)**  
 ATT-03-022/ ATT-03-023



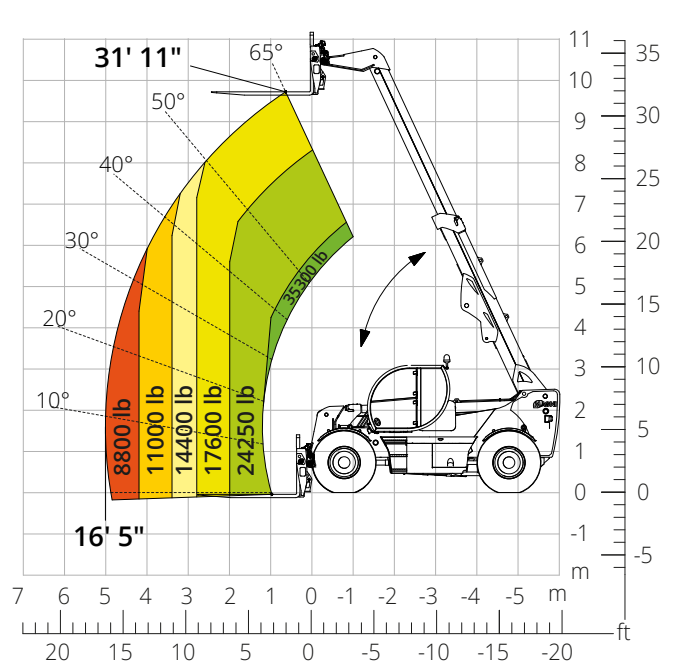
Load chart  
**FRONT ATTACHMENT ON TIRES (AUS)**  
 ATT-03-022/ ATT-03-023



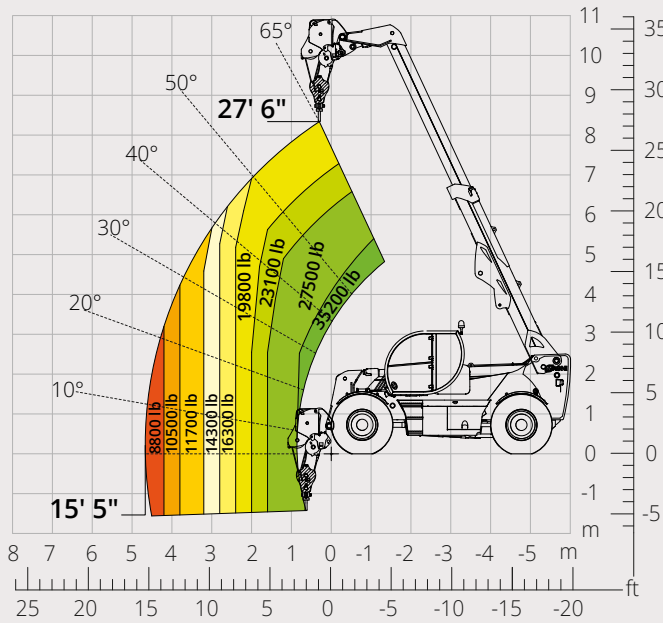
Load chart with  
**FORKS WITH POSITIONER AND SIDE SHIFT, 35,300 lb**  
 ATT-03-024



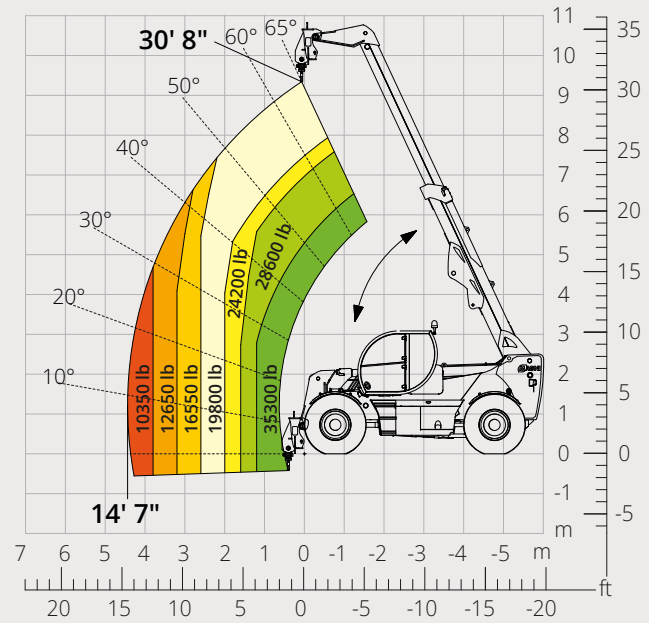
Load chart with  
**FORKS WITH POSITIONER, 35,300 lb**  
 ATT-03-025



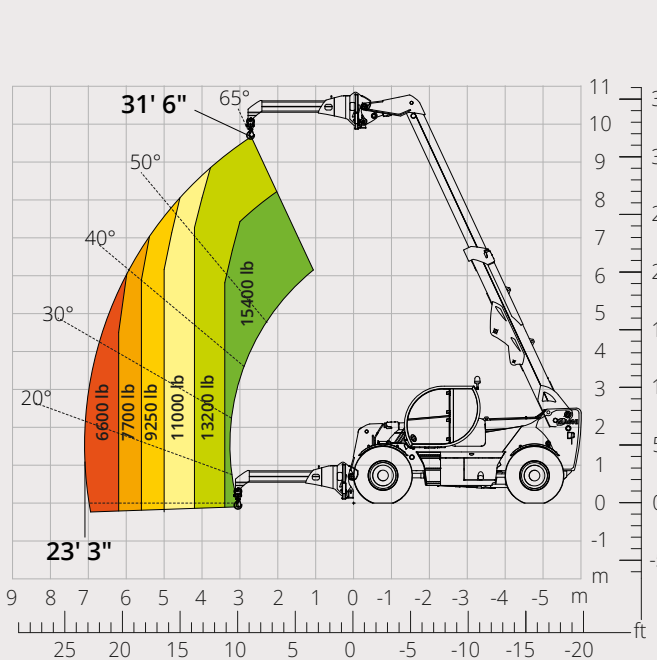
Load chart with  
**WINCH, 35,300 lb**  
ATT-02-008



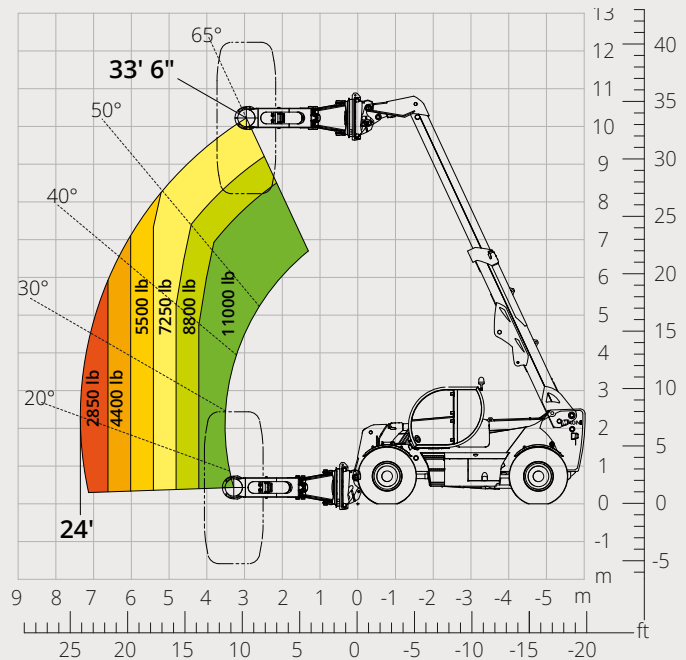
Load chart with  
**HOOK, 35,300 lb**  
ATT-05-007



Load chart with  
**JIB, 17,600 lb**  
ATT-04-026



Load chart with  
**TIRE HANDLER, 17,600 lb**  
ATT-06-006



<b>Machine model</b>	Telescopic handler	HTH 35.32	
	Maximum lifting capacity	35,300 lb	
	Maximum lifting height	31' 11"	
	Maximum reach	16'5"	
<b>Engine</b>	Model	<b>Volvo TAD582 VE-Stage V</b>	<b>Volvo TAD552 VE-Stage IIIA</b>
	Rated power	160 kW (218 hp) at 2,300 rpm	160 kW (218 hp) at 2,200 rpm
	Maximum torque	682 lb/ft at 1,380 rpm	671 lb/ft at 1,450 rpm
	Displacement	313 in <sup>3</sup>	
	Cylinders	4 in line	
	Engine type	Turbocharged direct injection common rail diesel	
	Cooling system	Water – intercooler	
	<b>Transmission</b>	Type	Hydrostatic
Maximum pressure		450 bar	
Gearbox		Dropbox, 2 speeds forward-reverse	
<b>Axles and brakes</b>	Type	Heavy-duty with planetary gearboxes	
	Front axle	Steering with levelling, +/-8°	
	Rear axle	Steering and oscillating	
	No. of driving - steering wheels	4WD - 4WS	
	Steering mode	Frontal/Concentric/Crab	
	Service brake	Servo-assisted pedal, acting on front and rear wheels	
	Parking brake	Hydraulic with negative action on front and rear axles	
	Tire sizes	16,00- R 25	
<b>Performance</b>	Max. travel speed	15.5 mph	
	Gradeability (unladen)	56%	
	Turning radius	16'7"	
<b>Weights</b>	Total unladen*	45,200 lb	
<b>Tank and system capacities</b>	Diesel fuel	52.8 U.S. gal	
	AdBlue	10.6 U.S. gal	
	Hydraulic fluid	55.48 U.S. gal	
	Engine oil	4.2 U.S. gal	
	Coolant	12.4 U.S. gal	
<b>Hydraulic circuit for movements</b>	Circuit type	Load sensing	
	Service pump	Variable displacement	
	Max. hydraulic flow rate	34.9 U.S. gmp	
	Max. boom head flow rate	26.4 U.S.gpm	
	Max. working pressure	350 bar	
	Distributor for boom movements	Proportional hydraulic distributor	
	Movements control	Multifunction electro-proportional joystick	
<b>Standards met</b>	2006/42/EC: EU Machinery Directive		
	2016/1628: EU Regulation on the emissions of stage V engines		
	EN 1459-X: Relating to standards on the safety requirements for variable reach machines		
	ROPS/level 2 FOPS: relating to the standards for protective structures		

The data given in this brochure are provided for information purposes and are subject to change without prior notice.

All images are purely guideline and might not give an exact representation of the product.

\*the stated weight refers to the vehicle unladen with standard equipment and may vary depending on the chosen configuration.

## The standard machine configuration includes:

### CAB

- Comfort seat
- Adjustable steering column
- Analogue joypad
- Heating
- Air conditioning
- FM/AM radio with USB and Bluetooth connectivity
- USB Type-A (5 V) inputs

### REAL TIME INFORMATION

- Touchscreen, 7"
- MCTS – Magni Combi Touch System on-board software
- Automatic RFID tools recognition system
- LMI – Load Moment Indicator
- Onboard and remote integrated diagnostics

### TECHNICAL SPECIFICATIONS

- Q-Fit Heavy-Duty
- Two-line CAN BUS system
- Automatic front and rear wheel alignment
- Automatic parking brake
- Mechanical battery cut-off in engine compartment
- Electrical system: 24 V – IP67

### SERVICE

- MyMagni by Trackunit connectivity system (free of charge on request)
- Warranty: 24 months/2,000 hours