

# HTH 22.31



MINING &  
QUARRYING



HEAVY  
LOGISTICS

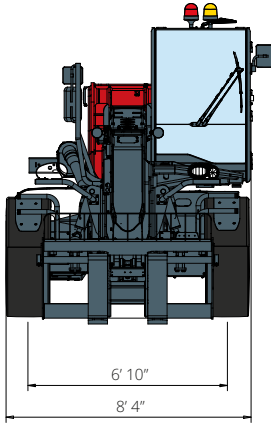


DEFENSE

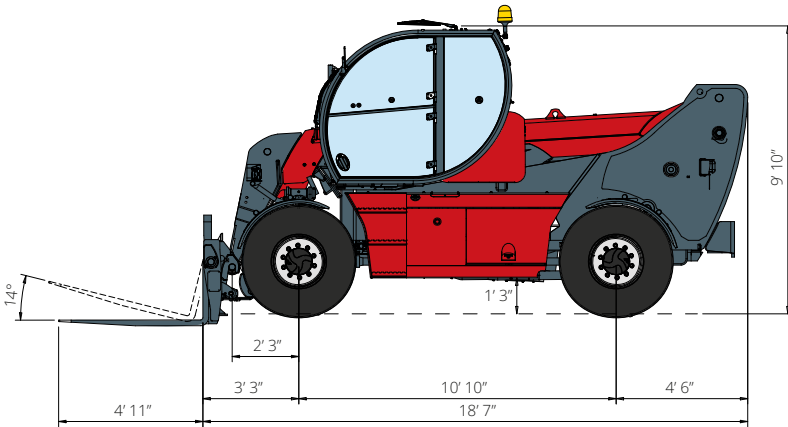


# HTH 22.31

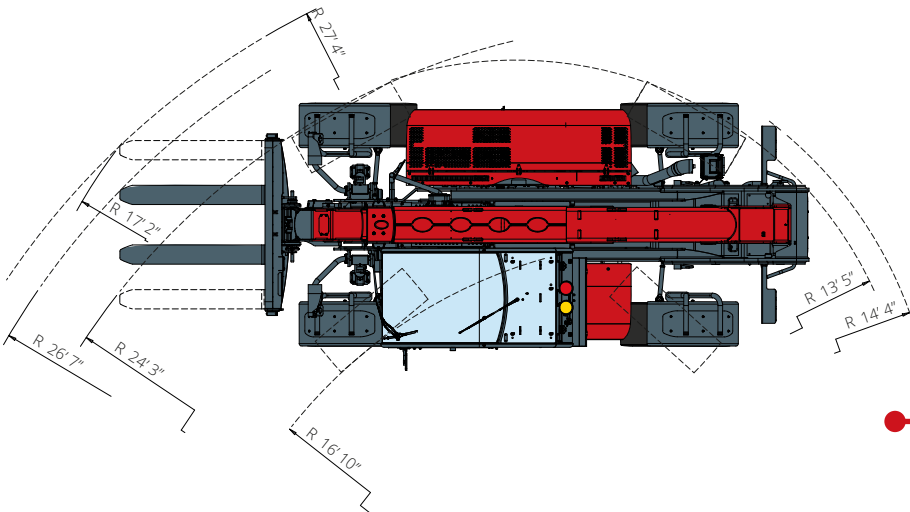
## DIMENSIONS (ft and in)



**FRONT**  
view

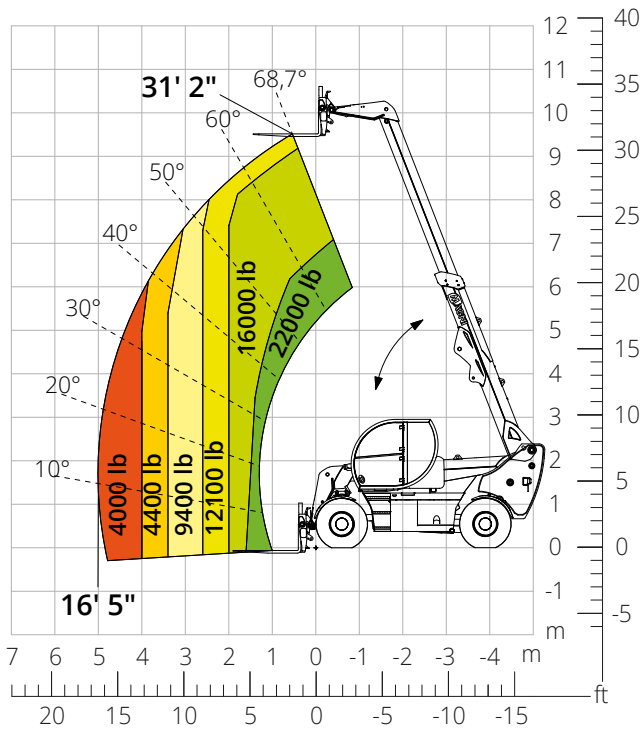


**SIDE**  
view

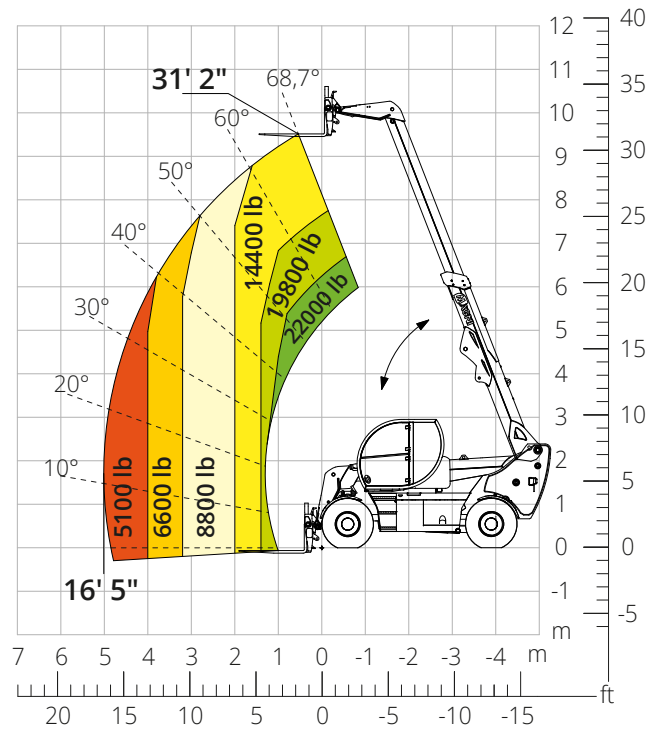


**TOP**  
view

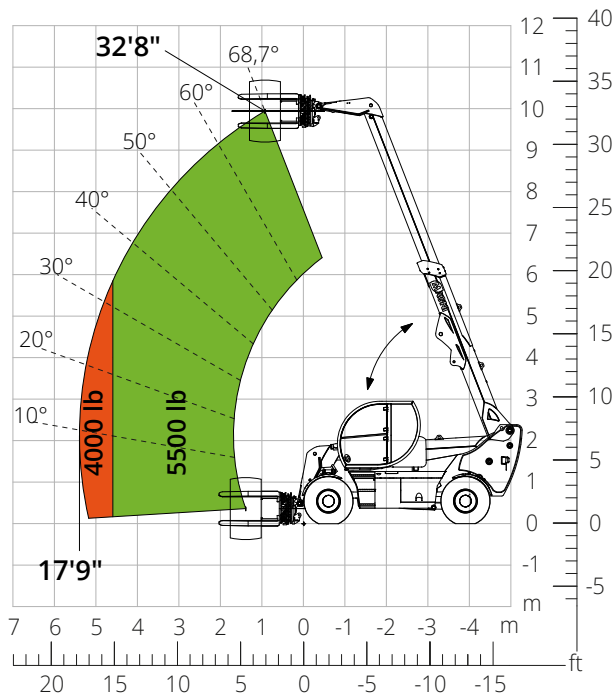
Load chart  
**FRONT ATTACHMENT ON TIRES (WORLD NOT AUS)**  
 ATT-03-018/ ATT-03-019



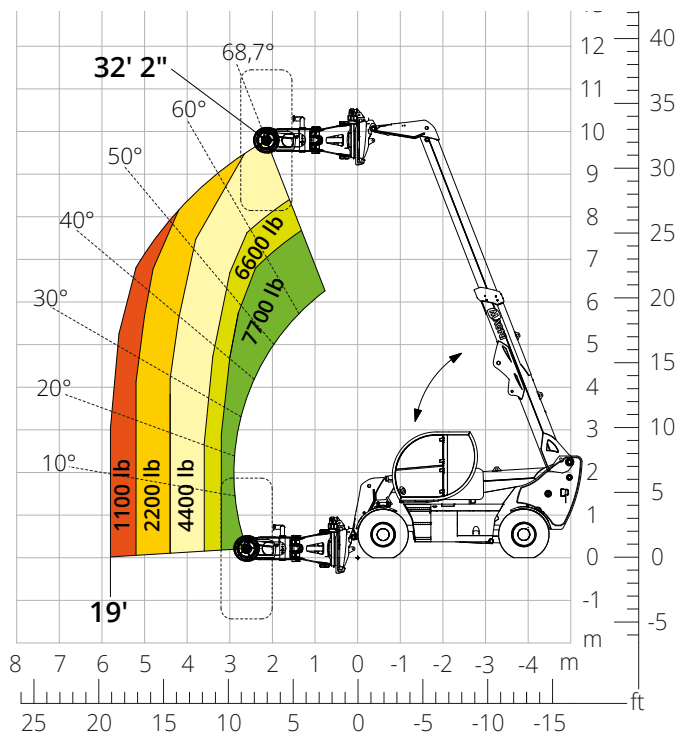
Load chart  
**FRONT ATTACHMENT ON TIRES (AUS)**  
 ATT-03-018/ ATT-03-019



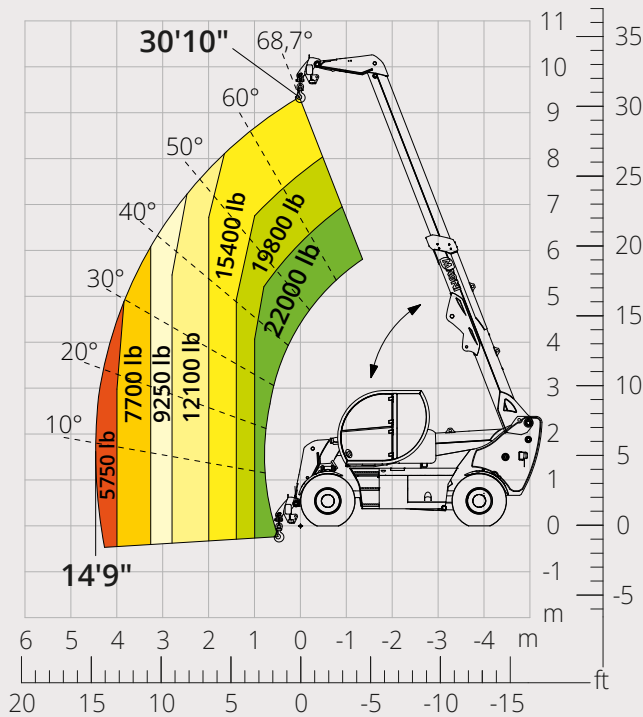
Load chart with  
**TIRE HANDLER, 5,500 lb**  
 ATT-06-003



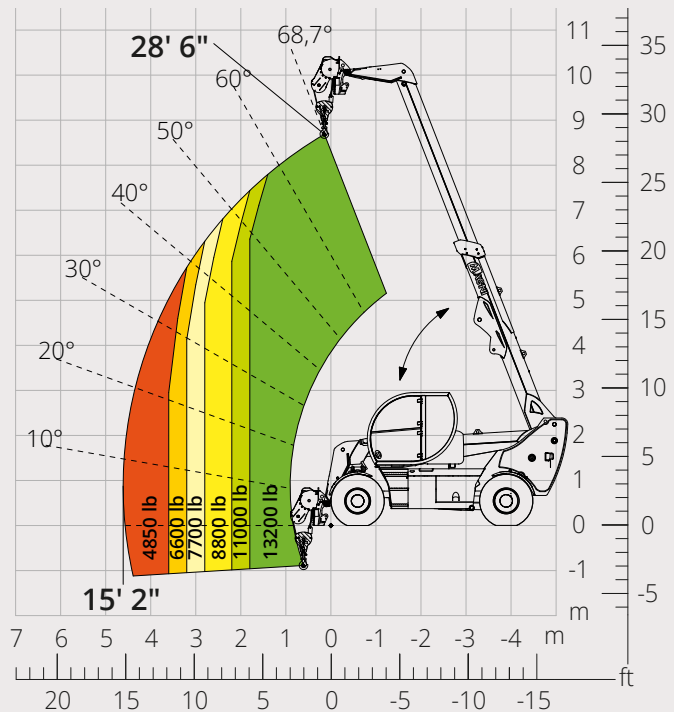
Load chart with  
**TIRE HANDLER, 7,700 lb**  
 ATT-06-004



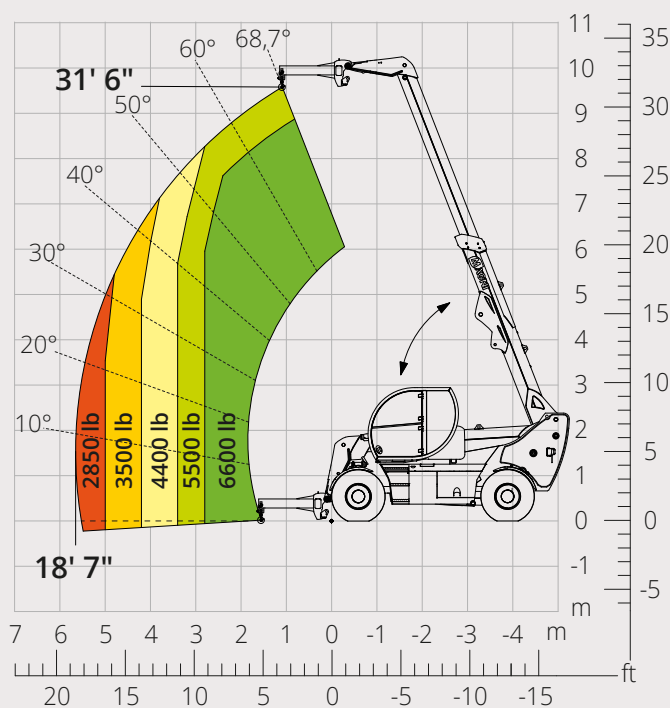
Load chart with  
**HOOK, 22,000 lb (WORLD NOT AUS)**  
 ATT-05-005



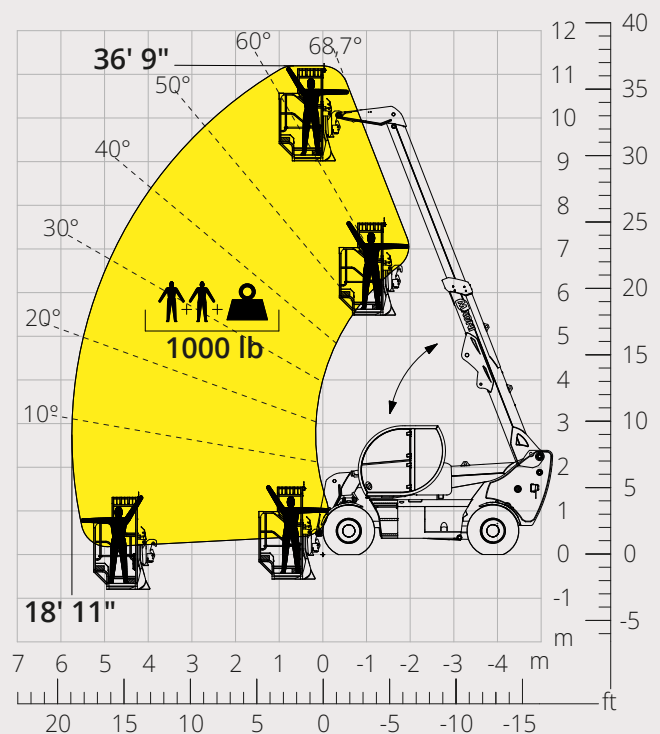
Load chart with  
**WINCH, 13,200 lb**  
 ATT-02-004



Load chart with  
**JIB, 6,600 lb**  
 ATT-04-019



Load chart with  
**PLATFORM, 1000 lb, FOR MINES**  
 ATT-01-027



<b>Machine model</b>	Telescopic handler	HTH 22.31	
	Maximum lifting capacity	22,000 lb	
	Maximum lifting height	31'2"	
	Maximum reach	16'5"	
<b>Engine</b>	Model	<b>Deutz TCD 3,6 L4-Stage V</b>	<b>Deutz TCD 3,6 L4 - Stage IIIA</b>
	Rated power	100 kW (136 hp) at 2,200 rpm	
	Maximum torque	369 lb/ft at 1.600 rpm	
	Displacement	219.7 in <sup>3</sup>	
	Cylinders	4 in line	
	Engine type	Turbocharged direct injection common rail diesel	
	Cooling system	Water – intercooler	
<b>Transmission</b>	Type	Hydrostatic	
	Maximum pressure	450 bar	
	Gearbox	Dropbox, 2 speeds forward-reverse	
<b>Axles and brakes</b>	Type	Heavy-duty with planetary gearboxes	
	Front axle	Steering with levelling, +/-8°	
	Rear axle	Steering and oscillating	
	No. of driving - steering wheels	4WD - 4WS	
	Steering mode	Frontal/Concentric/Crab	
	Service brake	Servo-assisted pedal, acting on front and rear wheels	
	Parking brake	Hydraulic with negative action on front and rear axles	
	Tire sizes	18 R22.5	
<b>Performance</b>	Max. travel speed	25 mph	
	Gradeability (unladen)	63%	
	Turning radius	13'5"	
<b>Weights</b>	Total unladen*	29,100 lb	
<b>Tank and system capacities</b>	Diesel fuel	51.5 U.S. gal	
	AdBlue	2.65 U.S. gal	
	Hydraulic fluid	50.2 U.S. gal	
	Engine oil	2.3 U.S. gal	
	Coolant	5.3 U.S. gal	
<b>Hydraulic circuit for movements</b>	Circuit type	Load sensing	
	Service pump	Variable displacement	
	Max. hydraulic flow rate	41.2 U.S. gpm	
	Max. boom head flow rate	19.9 U.S. gpm	
	Max. working pressure	350 bar	
	Distributor for boom movements	Proportional hydraulic distributor	
<b>Standards met</b>	Movements control	Multifunction electro-proportional joystick	
	2006/42/EC: EU Machinery Directive		
	2016/1628: EU Regulation on the emissions of stage V engines		
	EN 1459-X: Relating to standards on the safety requirements for variable reach machines		
	ROPS/level 2 FOPS: relating to the standards for protective structures		

*The data given in this brochure are provided for information purposes and are subject to change without prior notice.  
All images are purely guideline and might not give an exact representation of the product.*

*\*the stated weight refers to the vehicle unladen with standard equipment and may vary depending on the chosen configuration.*

## The standard machine configuration includes:

### CAB

- Comfort seat
- Adjustable steering column
- Analogue joypad
- Heating
- Air conditioning
- FM/AM radio with USB and Bluetooth connectivity
- USB Type-A (5 V) inputs

### REAL TIME INFORMATION

- Touchscreen, 7"
- MCTS – Magni Combi Touch System on-board software
- Automatic RFID tools recognition system
- LMI – Load Moment Indicator
- Onboard and remote integrated diagnostics

### TECHNICAL SPECIFICATIONS

- Q-Fit standard
- Provision for platform
- Two-line CAN BUS system
- Automatic front and rear wheel alignment
- Automatic parking brake
- Mechanical battery cut-off in engine compartment
- Electrical system: 24 V – IP67

### SERVICE

- MyMagni by Trackunit connectivity system (free of charge on request)
- Warranty: 24 months/2,000 hours