



RTH 6.51

THE HIGHEST IN THE WORLD

The RTH 6.51 is the highest rotating telescopic handler in the world. It is the perfect solution for all construction or industrial sites requiring best-in-class reach and lifting capacities.

This model allows the same attachment to be used in two different ways: strength mode M2 and stability mode M1. The first allows very heavy loads to be lifted, but with a more limited extension.

The second mode, on the other hand, allows for greater extension, but with more limited loads. It is compatible with a huge range of accessories, thanks also to the RFID system which provides automatic recognition and creation of the dynamic load charts; this telescopic handler is able to meet a wide range of applications in construction and industry.

TECHNICAL FEATURES

Maximum lifting height: 167' 4"

Forward reach: 113' 2"

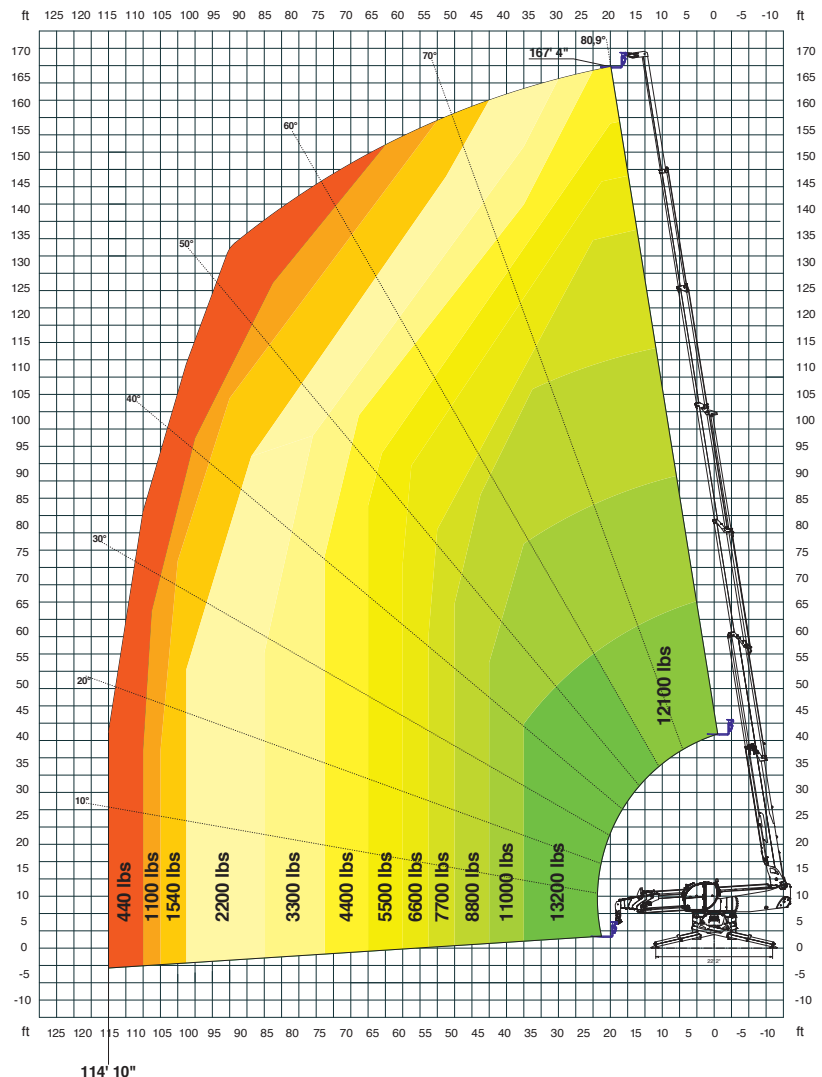
Max. Lifting Capacity: 13200 lbs

Machine Weight: 81000 lbs

Ground clearance: 14"

Gradeability: 42%

Preliminary



VOLVO ENGINE

Type: VOLVO TAD 572 VE - Tier 4F

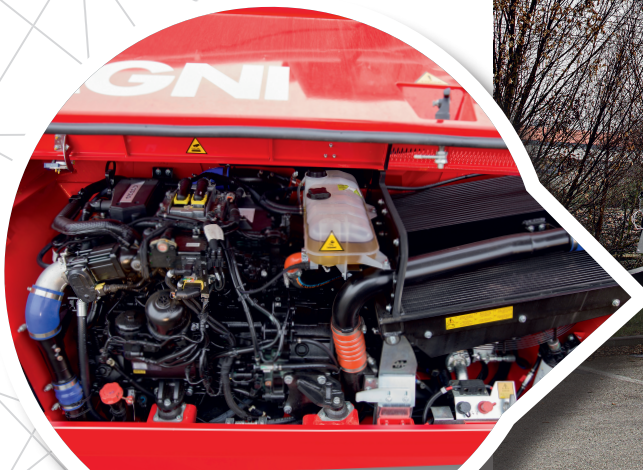
Rated power: 160Kw - 218 Hp at 2300 rpm

Cylinders: 4 in line

Maximum torque: 910Nm at 1410 rpm

Displacement: 5,13 L

Fuel: Turbocharger direct injection diesel





www.magnith.com